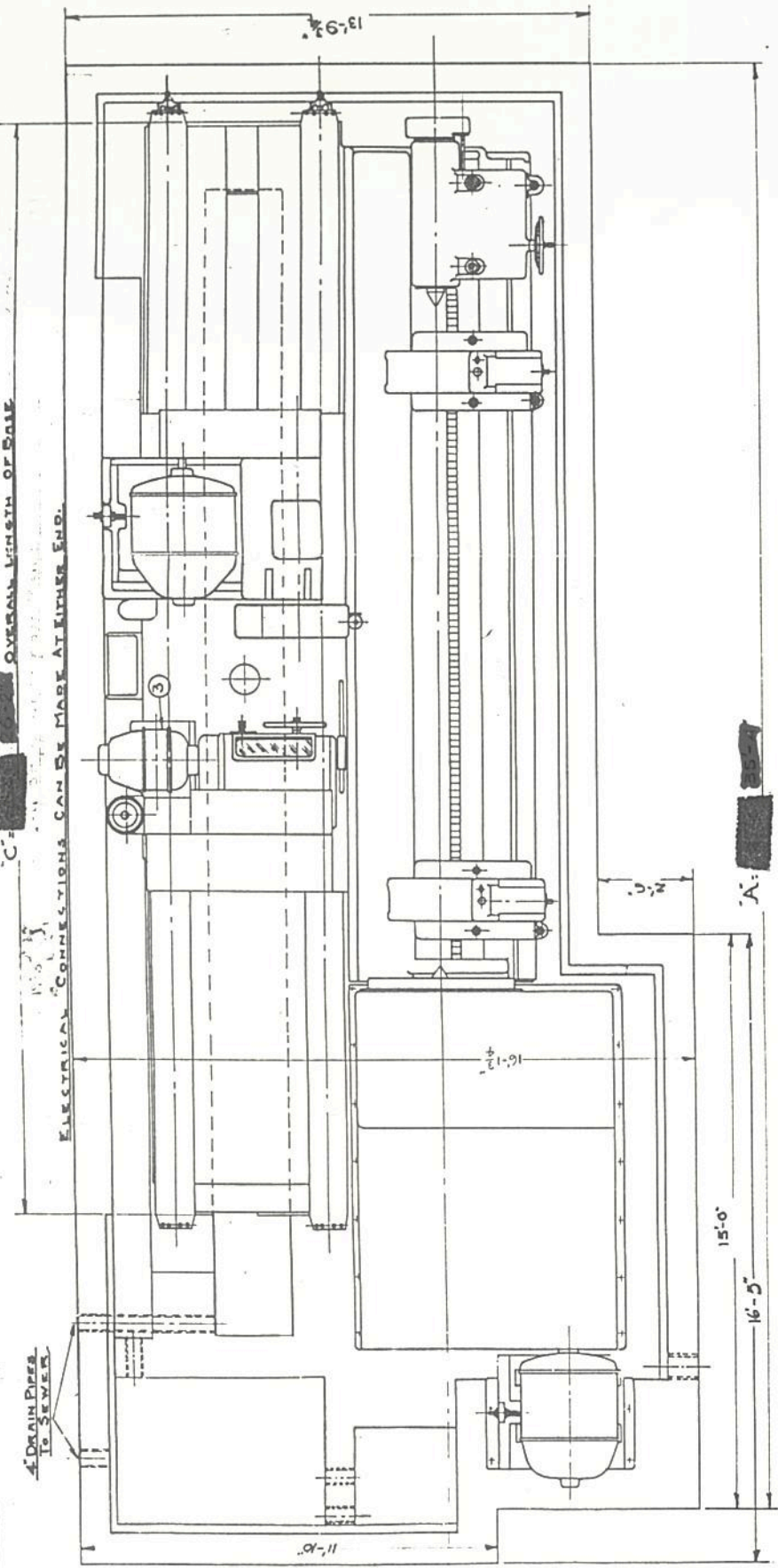


OVERALL LENGTH OF CASE

ELECTRICAL CONNECTIONS CAN BE MADE AT EITHER END.



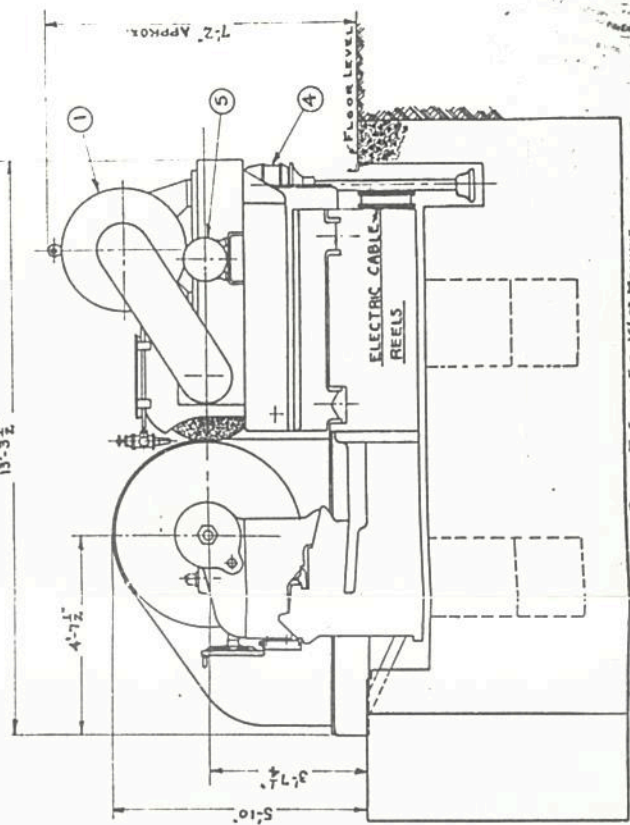
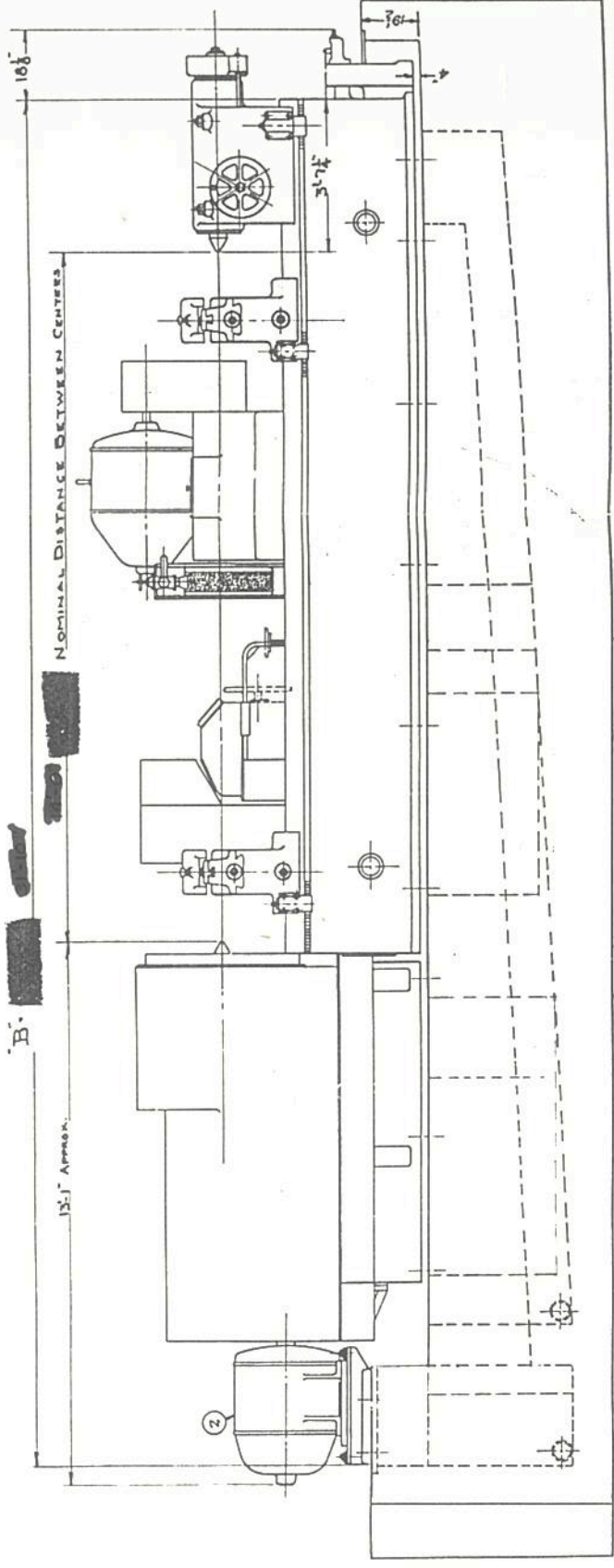
NUMBER	MOTOR	H.P.	R.P.M.
1	GRINDING WHEEL	40	600-1500
2	HEADSTOCK	15	300-1200
3	CHEMICAL DRIVE	3 To 5	300-1800
4	WATER PUMP	2	1150
5	WHEEL FEED	2	1150
6	WATER OIL PUMP	1/2	1750
7	SPECIAL OIL PUMP	1/2	1750

SURFACE SPEEDS

GRINDING WHEEL	3750 TO 9000 FEET PER MINUTE (36 Dia Wheel)
CARRIAGE	3 TO 108 INCHES PER MINUTE
ROLL	8 TO 32 REV. PER MINUTE

NOMINAL DISTANCE BETWEEN CENTERS

	14'-0"	16'-0"	18'-0"	20'-0"	22'-0"	24'-0"	26'-0"
A	35'-4"	37'-4"	39'-4"	41'-4"	43'-4"	45'-4"	47'-0"
B	29'-10"	31'-10"	33'-10"	35'-10"	37'-10"	39'-10"	41'-10"
C	24'-2"	26'-2"	28'-2"	30'-2"	32'-2"	34'-2"	36'-2"



FARREL-BIRMINGHAM CO., INC.
 BUFFALO, N.Y.
 501 W. MAIN ST.
 BUFFALO, N.Y.

ORDER DRAWN BY: J.C.
 CHECKED: J.C.
 DATE: 6-23-22

FOR: GENERAL ASSEMBLY

72-C-147A

dest. N° 1702ES

GENERAL SPECIFICATIONS

1 pound = 0,4536 kg.

SIZE OF MACHINE	24"	28"	36"	44"	50"	60"
Maximum diameter roll machine will grind with full size wheel	25"	29"	37"	45"	51"	61"
Maximum diameter roll neck accommodated by standard neck rests	18 1/2"	20"	24"	32"	36"	36"
Work swing over bed—diameter	26"	30"	38"	46"	52"	62"
Maximum concavity of roll—diameter	.400"	.400"	.400"	.400"	.400"	.400"
Maximum crown of roll—diameter	.400"	.400"	.400"	.400"	.400"	.400"
Maximum weight machine will carry on centers—pounds	40,000	50,000	90,000	120,000	150,000	180,000
Coolant capacity—gallons	600	650	700	750	800	850
HEADSTOCK—DEAD CENTER MULTIPLE "V" BELT DRIVE						
Work speeds in R. P. M.	16 to 64	16 to 64	11 to 44	9 1/2 to 38	8 to 32	7 to 23
Diameter of center—large end	3 1/2"	3 1/2"	4 1/2"	5"	5 1/2"	6"
Taper of work center —.600" on Dia. Per Foot						
Length of headstock at base	50"	50"	51 1/2"	12 3/4"	12 3/4"	12 3/4"
Weight of headstock (Approx.)	12,000	12,000	20,100	50,000	50,000	61,000
Faceplate drive—Number of "V" belts	9	9	12	15	15	22
Faceplate drive—Size of "V" belts	1 1/4" x 3/4"	1 1/4" x 3/4"	1 1/4" x 3/4"	2" x 1 1/2"	2" x 1 1/2"	1 1/2" x 1"
FOOTSTOCK						
Diameter of center—large end	3 1/2"	3 1/2"	4 1/2"	5"	5 1/2"	6"
Taper of work center —.600" on Dia. Per Foot						
Diameter of Spindle	5 1/2"	5 1/2"	6 1/2"	8 1/2"	9 3/4"	10 1/4"
Length of Spindle	25"	25"	26"	35"	42 1/4"	42 1/4"
Length of footstock on bed	21"	21"	23"	30 1/4"	40"	40"
Weight of footstock (Approx.)	2,000	2,100	2,500	6,000	8,600	9,000
GRINDING WHEEL HEAD						
Grinding wheel diameter	30"	30"	36"	36"	36"	36"
Grinding wheel face—standard	3"	3"	4"	4"	4"	4"
Grinding wheel face—maximum	6"	6"	6"	6"	6"	6"
Wheel spindle—length	4 6/8"	4 6/8"	5 5"	5 5"	5 5"	5 5"
Wheel spindle bearings—wheel end	5 1/4" x 1 1/2"	5 1/4" x 1 1/2"	6 1/4" x 1 1/2"	6 1/4" x 1 1/2"	6 1/4" x 1 1/2"	6 1/4" x 1 1/2"
Wheel spindle bearings—drive end	4 3/4" x 1 1/2"	4 3/4" x 1 1/2"	5 3/4" x 1 1/2"	5 3/4" x 1 1/2"	5 3/4" x 1 1/2"	5 3/4" x 1 1/2"
Number of "V" Belts—7/8" x 1 1/2"	9	9	12	12	12	12
Spindle speed—R. P. M.	450 to 900	450 to 900	400 to 1000	400 to 1000	400 to 1000	400 to 1000
Length of bearing on sub-base	4 5/8"	4 5/8"	5 6/8"	5 6/8"	5 6/8"	5 6/8"
Diameter of wheel feed screw	3"	3"	3"	3"	3"	3"
Handwheel graduated to reduce work roll	.0005"	.0005"	.0005"	.0005"	.0005"	.0005"
Rapid power feed of grinding wheel	Yes	Yes	Yes	Yes	Yes	Yes
Weight of wheelhead including sub-base but no motor	11,000	11,000	13,300	13,300	13,300	13,600
GRINDING WHEEL CARRIAGE						
Carriage speed—inches per minute	21 1/2" to 72"	21 1/2" to 72"	21 1/2" to 108"	21 1/2" to 108"	21 1/2" to 108"	21 1/2" to 108"
Hand operated wheel traverse for shoulder grinding	Yes	Yes	Yes	Yes	Yes	Yes
Distance between carriage ways	3'0"	3'0"	4'0"	4'0"	4'0"	4'0"
Width of each way	6 1/2"	6 1/2"	6 1/2"	6 1/2"	6 1/2"	6 1/2"
Overall length of carriage on ways	9'6"	9'6"	9'10 1/2"	9'10 1/2"	9'10 1/2"	9'10 1/2"
Weight of carriage assembled complete with motor (Approx.)	26,000	26,000	30,000	30,000	30,000	30,000

= banc